

# Fitment Instructions

## Adjuster Knob Replacement Kit to suit Pedders Adjustable Foam Cells

Part Number: 78-0010	Issue Date: 04 October 2024	Version: 1
-------------------------	--------------------------------	---------------

**Contents-** 1x Adjuster Knob, 1x Gasket, 2x Stainless Steel M5x0.8mm Button Head Screws.

**Tools Required-** 3mm Hex Key, Jack Stands, Wheel Chocks.

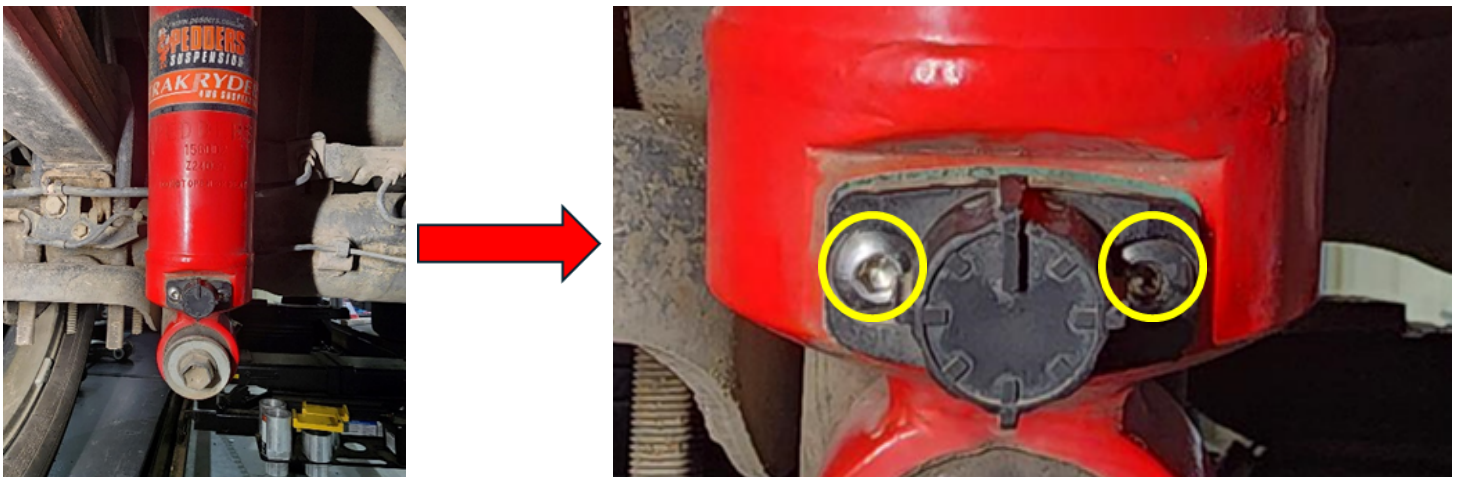
**Suggested Service Time-** 0.25hrs Per Shock.

1. Ensure the vehicle is on a flat, stable surface, with engine turned off, transmission in park or in gear if manual transmission, and the park brake applied. **Use load rated jack stands if the vehicle needs to be lifted.**

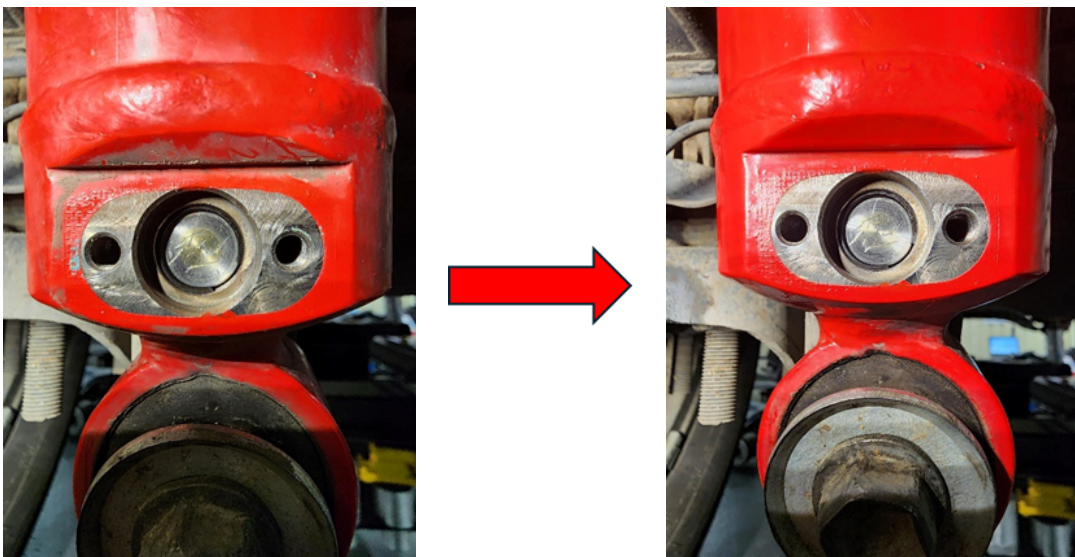


**CAUTION:** Never rely on park brake alone. Use suitable wheel chocks to prevent movement of the vehicle.

2. Locate and remove adjuster from shock absorber body using a 3mm Hex Key and undoing the two screws.



3. Clean the adjuster mounting surface and port of the shock absorber and ensure that is free from contaminants such as rocks, dirt and moisture.



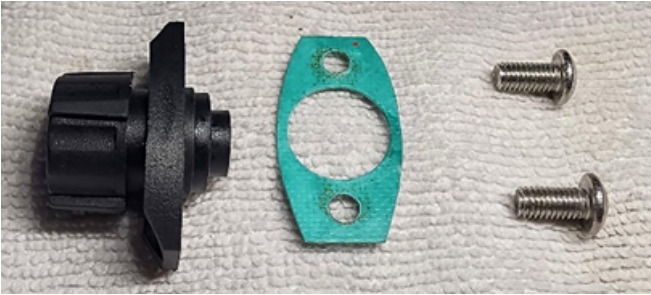
4. Begin replacement of adjuster using PEDDERS Part Number: 78-0010, assemble the gasket and replacement screws onto the adjuster.

Each kit contains:

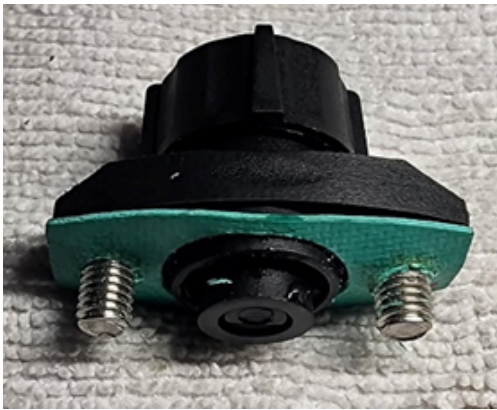
-1 x Adjuster knob

-1 x Gasket

-2 x Stainless Steel M5x0.8mm Button Head Cap Screws.



5. To ensure that the adjuster is correctly orientated on the shock absorber, check that when the adjuster is rotated full anticlockwise, the adjusting pin is not protruding.



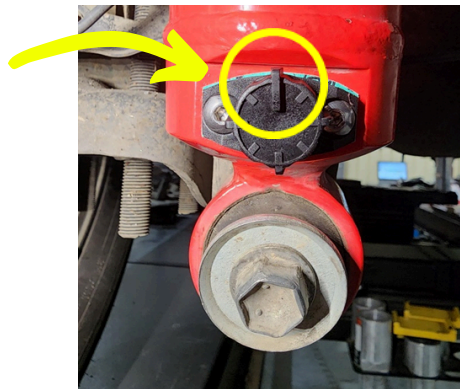
**Correct**



**Incorrect**

6. Install new assembled adjuster, ensuring the dial indicator is point up and hand tighten using a 3mm Hex Key.

**Dial Indicator**



7. Lastly - Toggle the adjuster knob from soft to firm to ensure it is operating correctly. Adjust knob to desired ride control, ensuring both LEFT and RIGHT shock absorbers are set to the same position on each axle.