

PROGRAM OVERVIEW

Designed for drivers who tow or carry loads, the Pedders GVM+ upgrade program has been engineered, tested and certified as an official upgrade for load carrying applications. The GVM+ suspension solution has been designed to ensure that the vehicle is not only fit for purpose but compliant with the road rules, OH+S and insurance requirements that we are all bound by.

More and more people are faced with the challenge of ensuring as far as is practicable that the passengers in their vehicle are provided with a safe driving environment. The Pedders GVM+ upgrade solution adds additional payload to a selected range of popular load carrying and towing vehicles.



VEHICLE SELECTION

In the majority of cases the market will determine the range of vehicles selected for researching for suitability to undergo a GVM+ upgrade. Once selected, critical analysis of all related components is undertaken to assess the impact of an increase in load carrying ability. Once a decision to design a kit is taken, that background work forms the basis of what type of increase is aimed for and whether this includes certification of things such as axle housing assemblies to a higher load capacity as a part of the upgrade.

INCREASED PAYLOAD

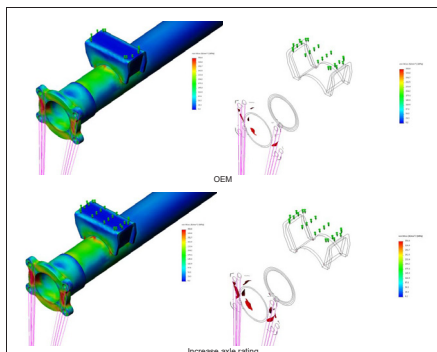
The increase in payload after a Pedders upgrade is dependent on the individual vehicle and component analysis with increases in payload of over 700kgs achieved in some cases.



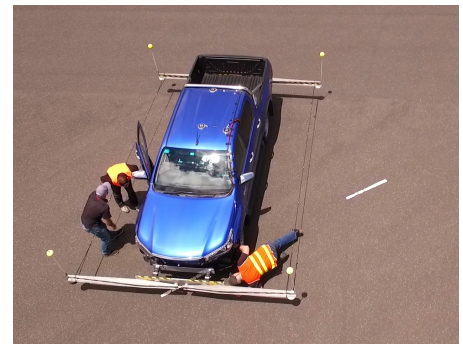
DESIGN, RESEARCH, DEVELOPMENT & ENGINEERING

After getting to this point in the process, Pedders outsources the engineering testing and certification to ensure all aspects of compliance with the Australian Design Rules. All solutions are rigorously tested and signed off prior to presentation of that evidence to the Federal Office for Vehicle Safety Standards in Canberra.

OEM vs Proposed Increased axle rating (on selected vehicles).



ESC Testing with State of the Art Testing Procedures.



CERTIFICATION

The process for approval certification as a second stage manufacturer is quite similar to that of an original equipment manufacturer. Each Pedders GVM+ upgrade solution must pass all Australian Design Rules and Safety Standards.

INDIVIDUAL SOLUTIONS

With a Pedders GVM+ solution you can get your vehicle on the road knowing that you have the backing of the worlds' largest chain of specialist suspension, steering and brake outlets. With official federal certification, industry leading warranty and independently engineered solutions you can't go past Pedders for all of your GVM upgrade needs. **NO BULL!**

WARRANTY

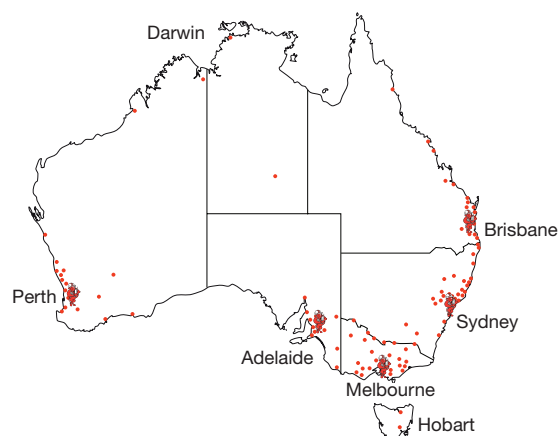
All suspension components installed as a part of a Pedders GVM+ upgrade solution to new un-registered vehicles are backed by a mirror of the original manufacturers new car warranty. This brings peace of mind for the fleet manager and small business operator alike.

NATIONAL SUPPORT

With a network of over 120 Service Centers and Authorised Dealers backed by literally 100's more distributors in all corners of Australia we have got you covered!

With a Pedders GVM Plus solution you can get your fleet on the road knowing that you have the backing of the Worlds' largest chain of specialist suspension, steering and Brake outlets. With official federal certification, industry leading warranty and independently engineered solutions you can't go past Pedders for all of your GVM upgrade needs.

NO BULL!





Ford Ranger
Up to 3500Kgs



Holden Colorado RG
Up to 3420Kgs



**Holden Colorado
RG2 & RG3**
Up to 3450Kgs



Hyundai iLoad
Up to 3490Kgs



Isuzu D-Max
Up to 3450Kgs



Isuzu MUX
Up to 3200Kgs



Mazda BT-50
Up to 3500Kgs



Mistubishi MQ Triton
Up to 3100Kgs



Mistubishi MR Triton
Up to 3200Kgs



Nissan Navara D23
Up to 3070Kgs Leaf
Up to 3070Kgs Coil



Nissan Navara D40
Up to 3215Kgs



Nissan Patrol
Up to 3505Kgs



Nissan Patrol Ute
Up to 3950Kgs Leaf
Up to 3505Kgs Coil



Toyota HiAce
Up to 3190Kgs LWB
Up to 3460Kgs SLWB



Toyota Hilux 05-15
Up to 3140Kgs



**Toyota Hilux 2016
4WD + 2WD Hi Ride**
Up to 3450kgs



**Toyota Hilux 2016
2WD Low Ride**
Up to 3100kgs



Toyota Landcruiser 76
Up to 3780Kgs



**Toyota Landcruiser
78/79**
Up to 3950Kgs



**Toyota Landcruiser 200
5 Seater**
Up to 3720Kgs



**Toyota Landcruiser 200
7 & 8 Seater**
Up to 3850Kgs



**Toyota Landcruiser
Prado 150 Series**
Up to 3500Kgs



Volkswagen Amarok
Up to 3305Kgs



VEHICLE	APPROVAL NO	OE AXLE RATINGS		OE GVM	PEDDERS AXLE RATINGS		PEDDERS GVM
		Front	Rear		Front	Rear	
Ford Ranger PX, PXII & PXIII H/D Kit	45311	1480kg	1850kg	3200kg	1480kg	2050kg	3500kg
Ford Ranger PX, PXII & PXIII O/E Axle Capacity Kit	45311	1480kg	1850kg	3200kg	1480kg	2050kg	3330kg
Holden Colorado RG 4WD 2012-On	45671	1450kg	1850kg	3150kg	1450kg	2000kg	3420kg
Holden Colorado RG 2WD 2012-On	45672	1450kg	1850kg	3150kg	1450kg	2000kg	3420kg
Holden Colorado RG2 & RG3 2WD & 4WD 2017-On	48965	1450kg	1850kg	3150kg	1450kg	2000kg	3450kg
Holden Colorado RG2 & RG3 2WD & 4WD O/E Axle Capacity Kit	48965	1450kg	1850kg	3150kg	1450kg	2000kg	3300kg
Hyundai iLoad	49771	1500kg	1890kg	3230kg	1600kg	1890kg	3490kg
Isuzu D Max 2012-On All HiRise models	47361	1350kg	1870kg	2850-3050kg	1450kg	2000kg	3450kg
Isuzu D Max 2012 On High Rise All Models O/E Axle Capacity Kit	47361	1350kg	1870kg	2850-3050kg	1450kg	2000kg	3220kg
Isuzu MUX 4WD 2013-On	48678	1350kg	1600kg	2750kg	1450kg	1750kg	3200kgs
Mazda BT50 UR & UP H/D Kit	45474	1480kg	1850kg	3200kg	1480kg	2050kg	3500kg
Mitsubishi Triton MQ Series 2WD/4WD	47536	1260kg	1840kg	2720/2900kg	1260kg	1840kg	3100kg
Mitsubishi Triton MR Series 2WD/4WD	47536	1260/1360kg	1840kg	2720/2900kg	1360kg	1840kg	3200kg
Nissan GU Patrol 3.0lt Leaf Spring Rear Ute	47524	1530kg	2240kg	3400kg	1560kg	2500kg	3950kg
Nissan GU Patrol 3.0lt Wagon 5 Seat (Original App-12483)	47524	1500kg	1800kg	3020kg	1560kg	1945kg	3505kg
Nissan GU Patrol 3.0lt Coil Sping Rear Ute	47524	1500kg	1800kg	3150kg	1560kg	1945kg	3505kg
Nissan Navara D40 all exc Single Cab/Chassis	45684	1365-1530kg	1717-1720kg	2860-3010kg	1365-1530kg	1960kg	3215kg
Nissan Navara D23 NP300 Dual Cab Ute	47533	1320kg	1750kg	2910kg	1320kg	1750kg	3070kg
Nissan Navara D23 NP300 Single/King Cab Leaf Spring Ute	47533	1320kg	1750kg	2910kg	1320kg	1750kg	3070kg
Toyota HiAce-LWB	47168	1550kg	1550kg	2800kg	1640kg	1550kg	3190kg
Toyota HiAce-SLWB	47168	1640kg	1820kg	3200kg	1640kg	1820kg	3460kg
Toyota Hilux 08/2015 on GEN 8 4WD & 2WD Hi Ride	47825	1450kg	1700kg	3000kg	1450kg	2000kg	3450kg
Toyota Hilux 08/2015 on GEN 8 4WD & 2WD Hi Ride O/E Axle Capacity Kit	47825	1450kg	1700kg	3000kg	1450kg	2000kg	3150kg
Toyota Hilux 08/2015 on GEN 8 4X2 Low Ride	47825	1200kg	1750kg	2700kg	1200kg	1900kg	3100kg
Toyota Hilux KUN 26 4WD	45905	1340kg	1600kg	2780-2810kg	1340kg	1800kg	3140kg
Toyota Landcruiser 200 Series (5 seat commercial)	46509	1700kg	1950kg	3300kg	1700kg	2020kg	3720kg
Toyota 200 & 202 Series 7+8 Seat Petrol+Diesel	48677	1700kg	1950kg	3350kg	1700kg	2150kg	3850kg
Toyota Landcruiser VDJ76 (5 door wagon) 2007-7/2016	45325	1480kg	2180kg	3060kg	1480kg	2300kg	3780kg
Toyota Landcruiser VDJ78/79 (Ute d/cab and troop)	45325	1480kg	2300kg	3300kg	1540kg	2420kg	3950kg
Toyota Landcruiser VDJ78/79 (Ute) Single Cab HyRail	45325	1480kg	2300kg	3300kg	1750kg	2420kg	3950kg
Toyota Landcruiser Prado 150 Series KDJ150R/GRJ150R/GDJ150R	49606	1450kg	1800kg	2990kg	1450kg	2050kg	3500kg
Volkswagen Amarok (excludes V6 diesel models)	46433	1270-1425kg	1620-1860kg	2820-3170kg	1425kg	1860kg	3285kg
Volkswagen Amarok (V6 diesel models Only)	46433	1445kg	1630-1860klg	2920-3080kg	1445kg	1860kg	3305kg