

PROGRAM OVERVIEW

Designed for drivers who tow or carry loads, the Pedders GVM+ upgrade program has been engineered, tested and certified as an official upgrade for load carrying applications. The GVM+ suspension solution has been designed to ensure that the vehicle is not only fit for purpose but compliant with the road rules, OH+S and insurance requirements that we are all bound by.

More and more people are faced with the challenge of ensuring as far as is practicable that the passengers in their vehicle are provided with a safe driving environment. The Pedders GVM+ upgrade solution adds additional payload to a selected range of popular load carrying and towing vehicles.



VEHICLE SELECTION

In the majority of cases the market will determine the range of vehicles selected for researching for suitability to undergo a GVM+ upgrade. Once selected, critical analysis of all related components is undertaken to assess the impact of an increase in load carrying ability. Once a decision to design a kit is taken, that background work forms the basis of what type of increase is aimed for and whether this includes certification of things such as axle housing assemblies to a higher load capacity as a part of the upgrade.

INCREASED PAYLOAD

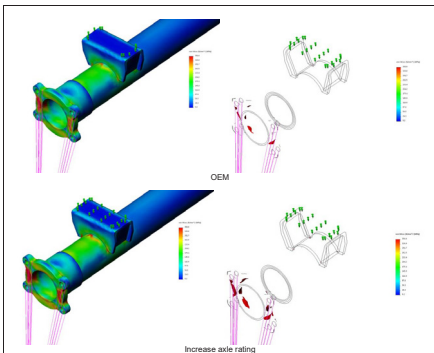
The increase in payload after a Pedders upgrade is dependent on the individual vehicle and component analysis with increases in payload of over 700kgs achieved in some cases.



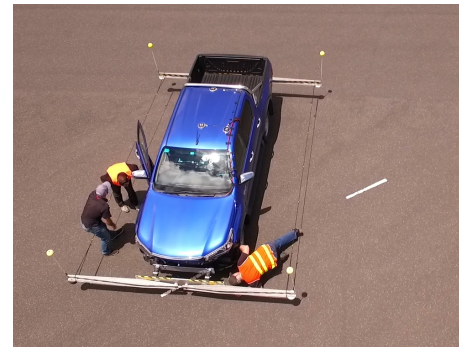
DESIGN, RESEARCH, DEVELOPMENT & ENGINEERING

After getting to this point in the process, Pedders outsources the engineering testing and certification to ensure all aspects of compliance with the Australian Design Rules. All solutions are rigorously tested and signed off prior to presentation of that evidence to the Federal Office for Vehicle Safety Standards in Canberra.

OEM vs Proposed Increased axle rating (on selected vehicles).



ESC Testing with State of the Art Testing Procedures.



CERTIFICATION

The process for approval certification as a second stage manufacturer is quite similar to that of an original equipment manufacturer. Each Pedders GVM+ upgrade solution must pass all Australian Design Rules and Safety Standards.



INDIVIDUAL SOLUTIONS

With a Pedders GVM+ solution you can get your vehicle on the road knowing that you have the backing of the worlds' largest chain of specialist suspension, steering and brake outlets. With official federal certification, industry leading warranty and independently engineered solutions you can't go past Pedders for all of your GVM upgrade needs. NO BULL!

WARRANTY

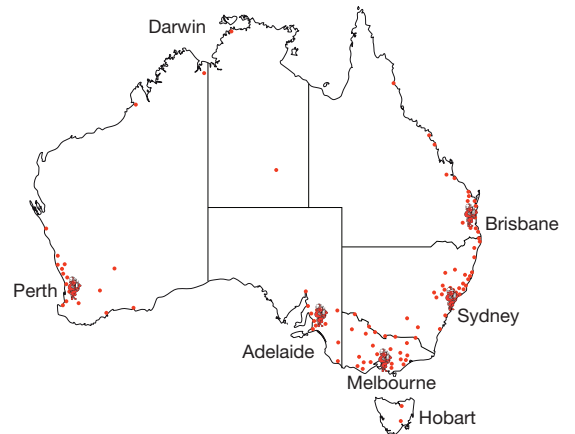
All suspension components installed as a part of a Pedders GVM+ upgrade solution to new un-registered vehicles are backed by a mirror of the original manufacturers new car warranty. This brings peace of mind for the fleet manager and small business operator alike.

NATIONAL SUPPORT

With a network of over 120 Service Centers and Authorised Dealers backed by literally 100's more distributors in all corners of Australia we have got you covered!

With a Pedders GVM+ solution you can get your fleet on the road knowing that you have the backing of the Worlds' largest chain of specialist suspension, steering and Brake outlets. With official federal certification, industry leading warranty and independently engineered solutions you can't go past Pedders for all of your GVM upgrade needs.

NO BULL!





Ford Ranger
Up to 3500Kgs



Holden Colorado RG
Up to 3420Kgs



**Holden Colorado
RG2 & RG3**
Up to 3450Kgs



Hyundai iLoad
Up to 3490Kgs



Isuzu D-Max
Up to 3450Kgs



Isuzu MUX
Up to 3200Kgs



Jeep Gladiator
Up to 3050Kgs



Mazda BT-50
Up to 3500Kgs



**Mazda BT-50
08/2020-On**
Up to 3450Kgs



Mistubishi MQ Triton
Up to 3100Kgs



Mistubishi MR Triton
Up to 3200Kgs



Nissan Navara D23
Up to 3070Kgs Leaf
Up to 3070Kgs Coil



Nissan Navara D40
Up to 3215Kgs



Nissan Patrol
Up to 3505Kgs



Nissan Patrol Ute
Up to 3950Kgs Leaf
Up to 3505Kgs Coil



Toyota HiAce 200
Up to 3190Kgs LWB
Up to 3460Kgs SLWB



**Toyota HiAce 300
LWB/SLWB 4/Cylinder
Diesel Auto Models Only**
Up to 3950Kgs



Toyota Hilux 05-15
Up to 3140Kgs



**Toyota Hilux 2015-On
4WD + 2WD Hi Ride**
Up to 3620kgs



**Toyota Hilux 2016
2WD Low Ride**
Up to 3100kgs



Toyota Landcruiser 76
Up to 3780Kgs



**Toyota Landcruiser
78/79 Up to 3950Kgs
79 Series up to 4200kgs**



**Toyota Landcruiser 200
5, 7 & 8 Seater**
Up to 3850Kgs



**Toyota Landcruiser
Prado 150 Series**
Up to 3500Kgs



Volkswagen Amarok
Up to 3305Kgs

